

THOMPSON'S
MARYLEBONE





**DANIELLE EUBANK
SHEILA McINNES
ANGELA REILLY**

AN EXHIBITION OF PAINTINGS

Show opens at 10am on Wednesday March 28th, 2007

Meet the artists between 4 and 6pm

All works are for sale on receipt of this catalogue

Continues until 7th April

THOMPSON'S
MARYLEBONE

76 Marylebone High Street,
London. W1U 5JU

Tel: +44 (0)20 7935 3595

enquiries@thompsonsgallery.co.uk

www.thompsonsgallery.com

Monday to Friday: 10am-6pm

Saturday: 11am-5pm

Sunday: 11am-4pm

Danielle Eubank *Jakarta Dawn 08* Oil on linen canvas 32 x 60 inches

Danielle Eubank

Danielle Eubank holds a Master of Fine Art from UCLA in Los Angeles. A native of California she regularly commutes across the Atlantic between her London and California studios. In 2004 she was Expedition artist aboard the Borobudur Ship which travelled from Indonesia to Africa. This challenging eight-month trip enabled her to study the behaviour of different bodies of water, thus enriching and informing her work as an oil painter.

As well as her sea paintings, Danielle is a notable portrait painter. The Standard Chartered Bank has recently commissioned a portrait for its new headquarters in London, currently under construction. The painting will be part of an international travelling show before it ultimately resides in the London office. In February 2008 she will be participating in her first museum show, at the Riverside Art Museum in California.

For our exhibition Eubank has continued with her water theme, seeking out and painting the different qualities of movement, colour and light on a variety of waters. Whether she is capturing the golden moment on the sea in Ancol before the sunset disappears; the play of light on the water at dawn in Jakarta Marina or on the more familiar water's of Hampstead duck pond, Eubank strives to capture a fleeting moment in the life of the object. In her new work she brings the subject right up to the surface of the canvas, into the viewer's space. The paint is layered with broad brushstrokes, inviting you to appreciate the physical, painterly qualities close-up and the personality of the subject at a distance.

We are delighted to have the opportunity of welcoming Danielle back for her second solo exhibition with Thompson's gallery.



Venice 02 Oil on linen canvas 30 x 24 inches

San Miguel de Allende Oil on linen canvas 24 x 24 inches

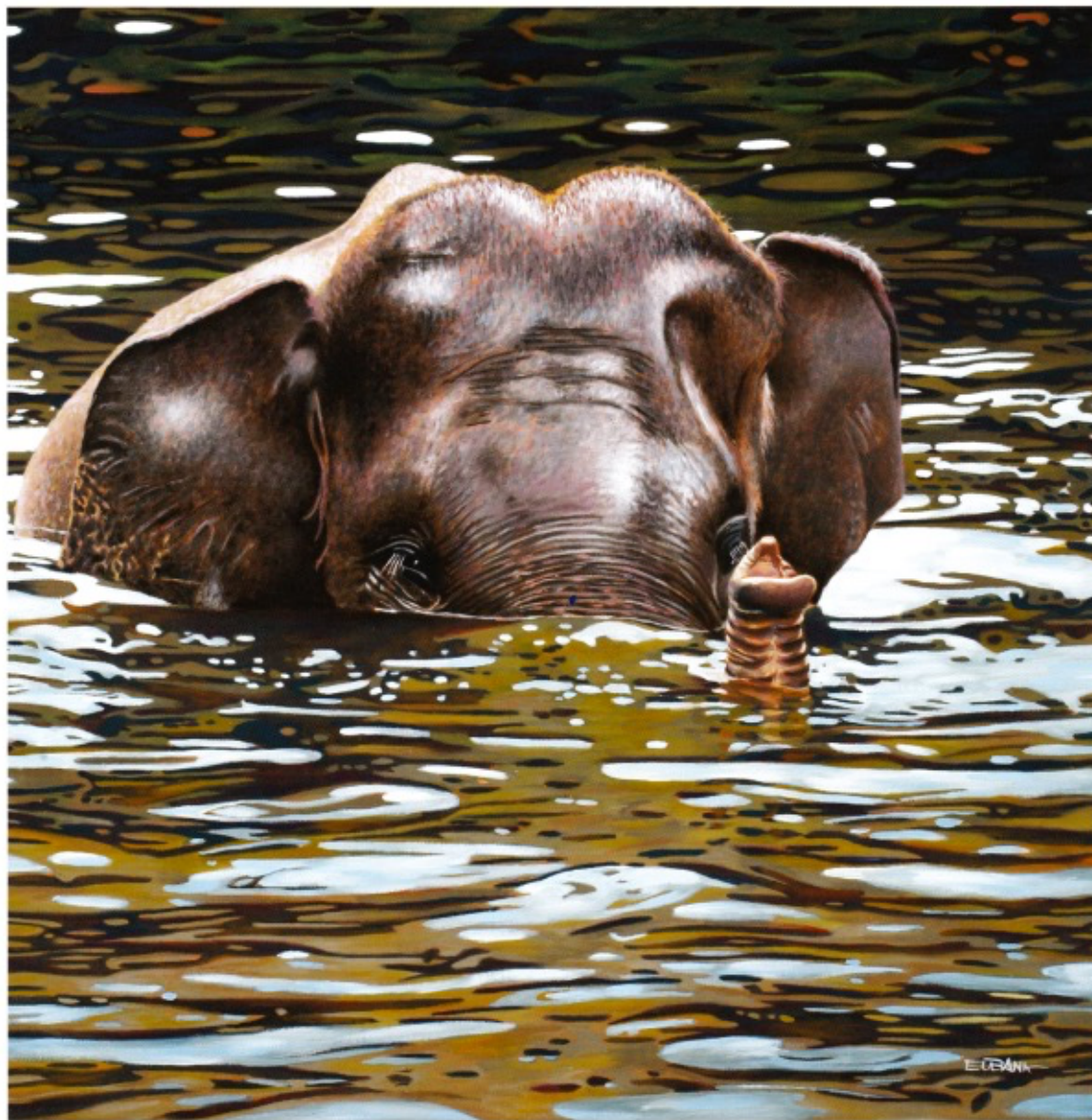




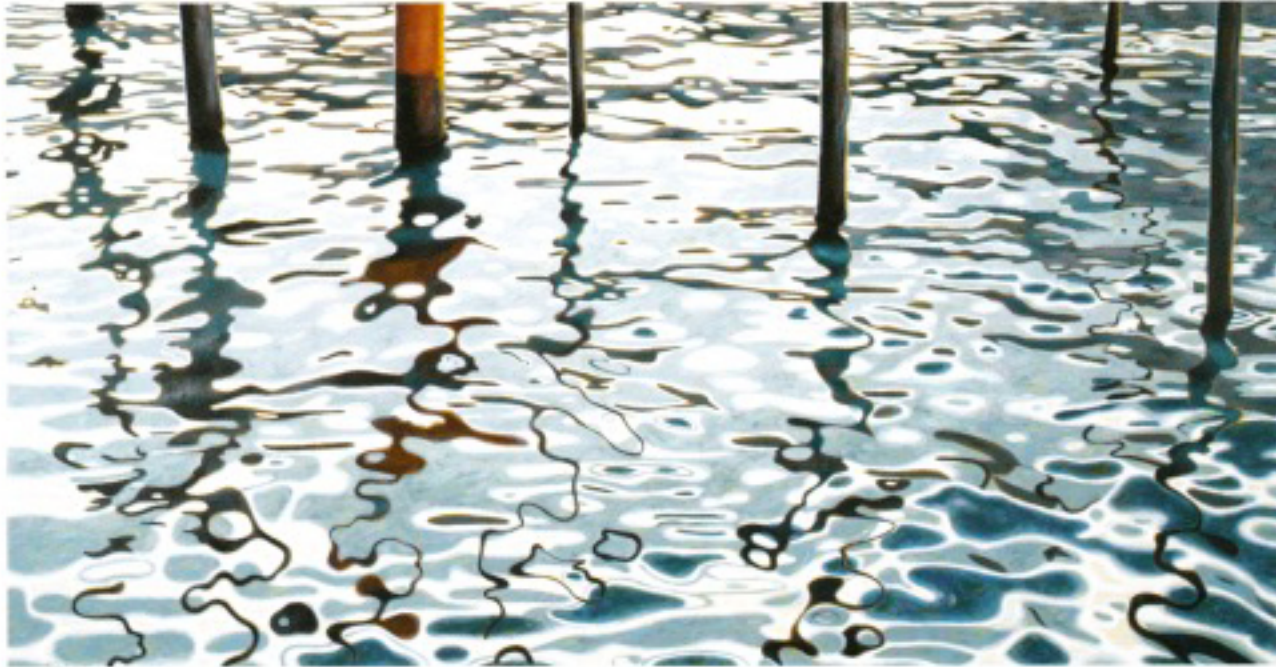
Hampstead Ducks 02 Oil on linen canvas 24 x 30 inches



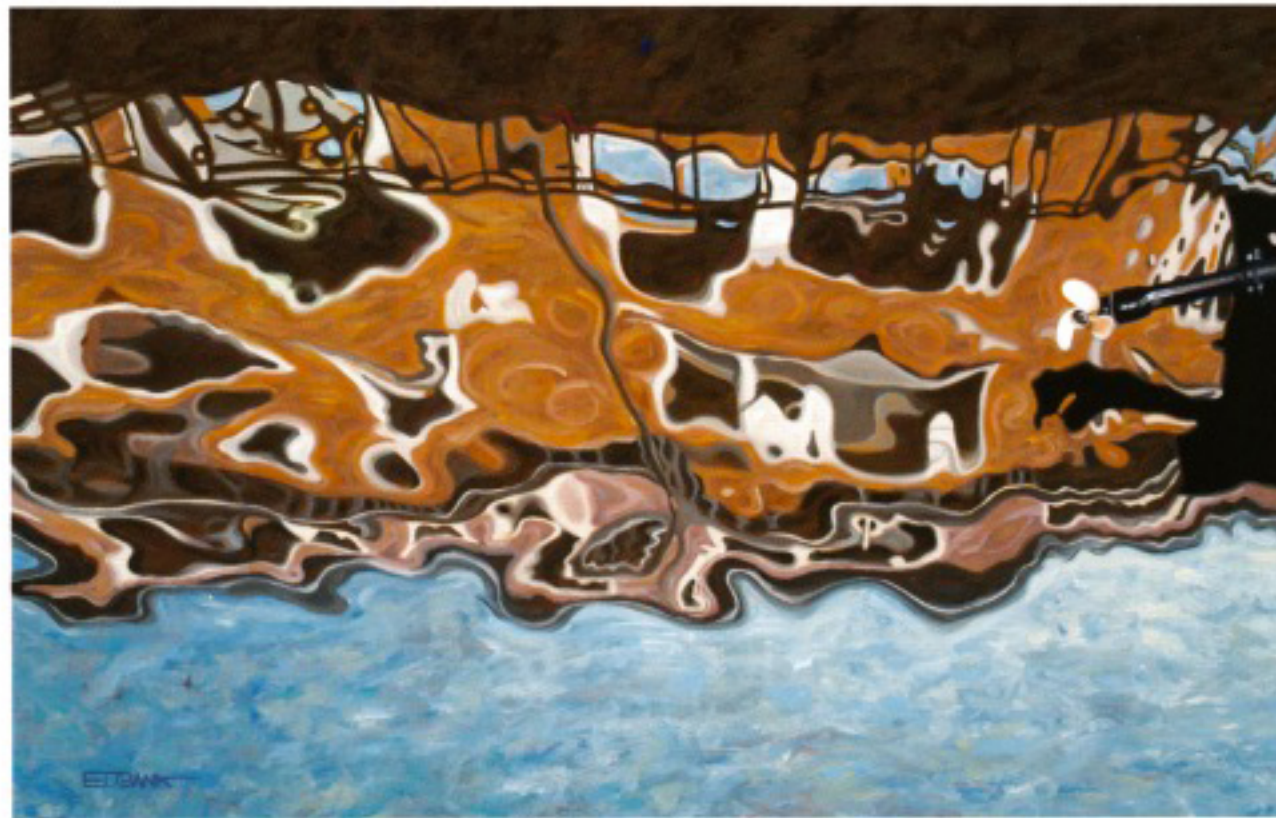
Isola Bella 02 Oil on linen canvas 20 x 32 inches



Elephant 02 Oil on linen canvas 30 x 30 inches

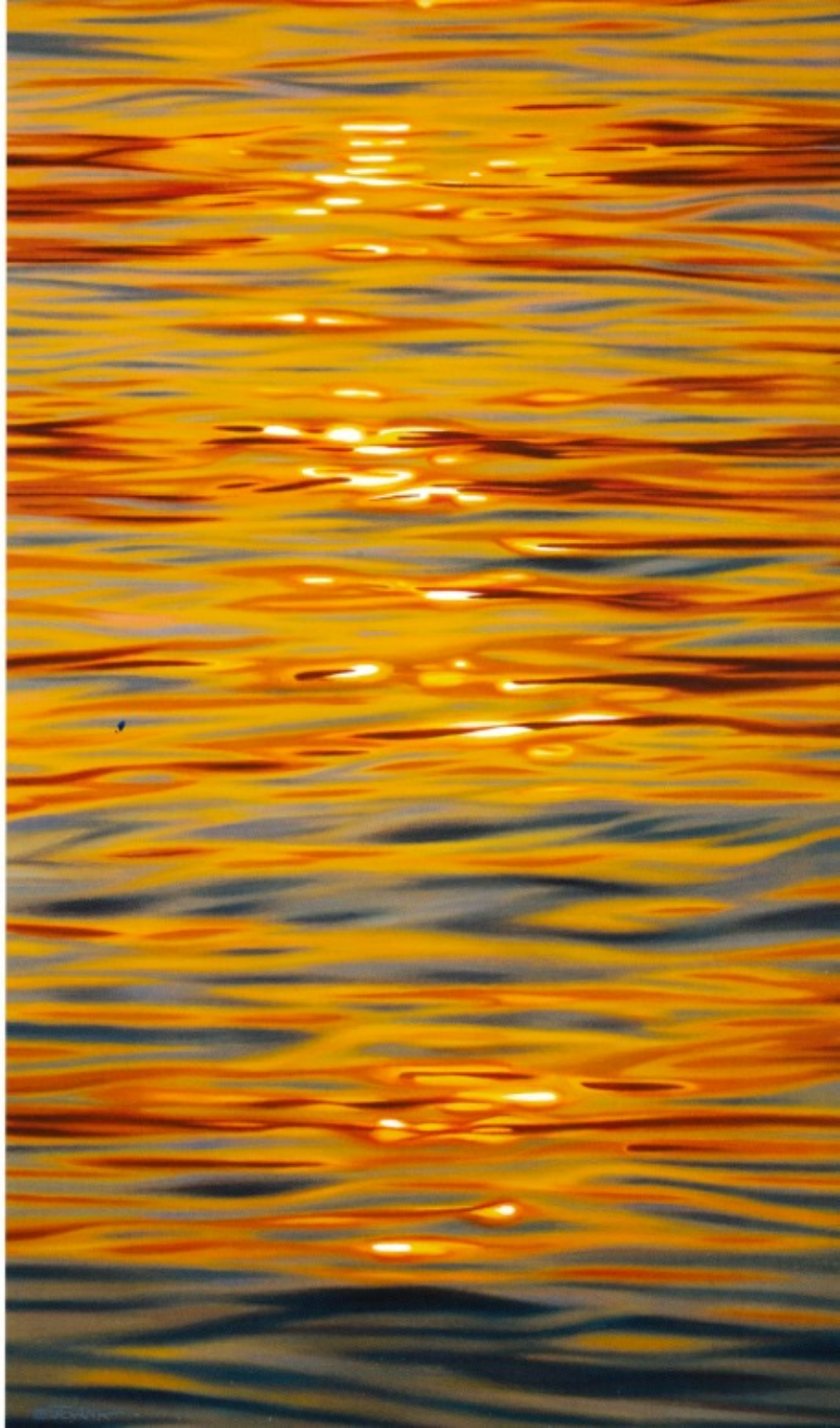


Grand Canal 02 Oil on linen canvas 32 x 60 inches

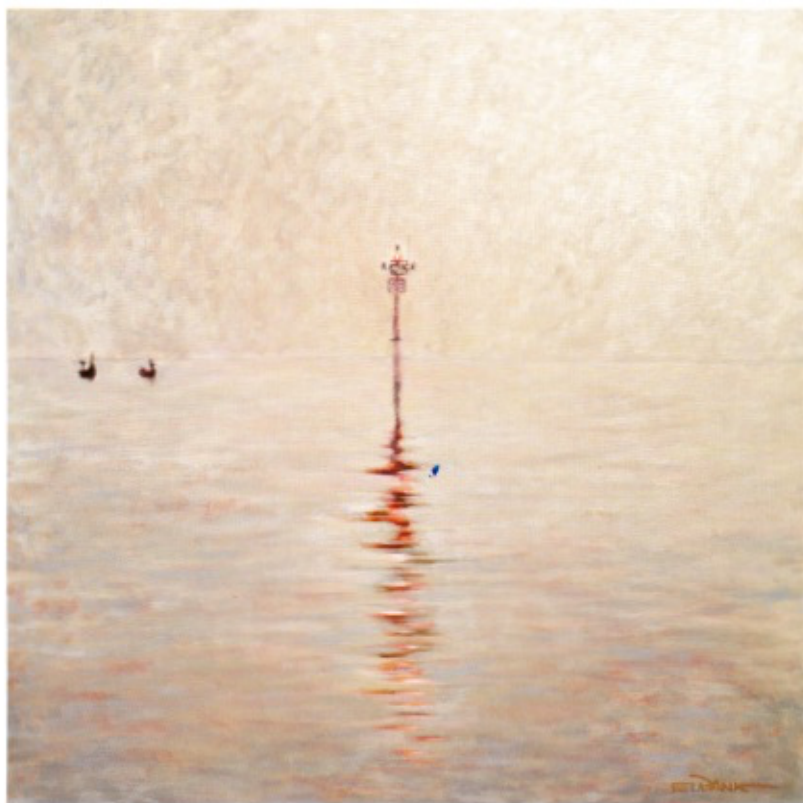


Venice 04 Oil on linen canvas 18 x 28 inches

Ancol 06 Oil on linen canvas 36 x 22 inches







Java Beacon 02 Oil on linen canvas 24 x 24 inches

Jakarta Marina 04 Oil on linen canvas 24 x 24 inches